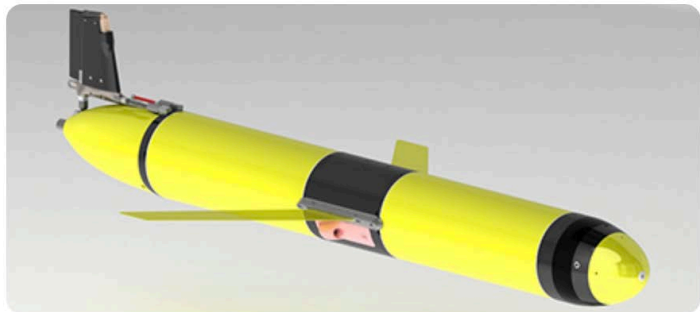


Future Webinars



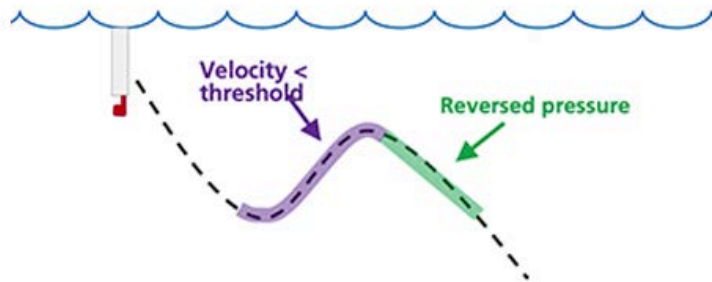
Development and evaluation of the RBRlegato CTD on glider platforms

Eric Siegel

May 20, 2020 at 12PM EDT

Learn how customers are using the new RBR*legato* glider CTD to extend glider missions, improve data quality, and enable more measurements.

[Register for the Webinar](#)



RSKtools: a free toolbox for CTD post-processing and data visualization

Greg Johnson

June 3, 2020 at 12PM EDT

Learn more about the many functions in the the free post-processing toolbox and how it can improve your CTD data quality.

[Register for the Webinar](#)

RBR

Future Webinars



CTD and sensor calibrations

Greg Johnson

June 10, 2020 at 12PM EDT

Learn about the RBR calibration procedure for conductivity, temperature, pressures, and other sensors, and how you can maintain, verify, and calibrate some sensors in the field.

[Register for the Webinar](#)



Wave measurements for ocean, coastal, and transient wave studies

Eric Siegel (RBR) & Curt Storlazzi (USGS)

June 17, 2020 at 12PM EDT

Expand your understanding of wave measurements, learn how to optimize your deployment settings, and review Ruskin wave processing methods

[Register for the Webinar](#)

RBR

RBR

Welcome, the RBR Webinar will begin shortly...



RBR

rbr-global.com

Ruskin

Greg Johnson

One app to rule them all

macOS/Windows10/iOS/Android

Every instrument we've made since 2005

Complete deployment simulation

Speaks your language

Automatic update

Contains all RUGs and RIGs

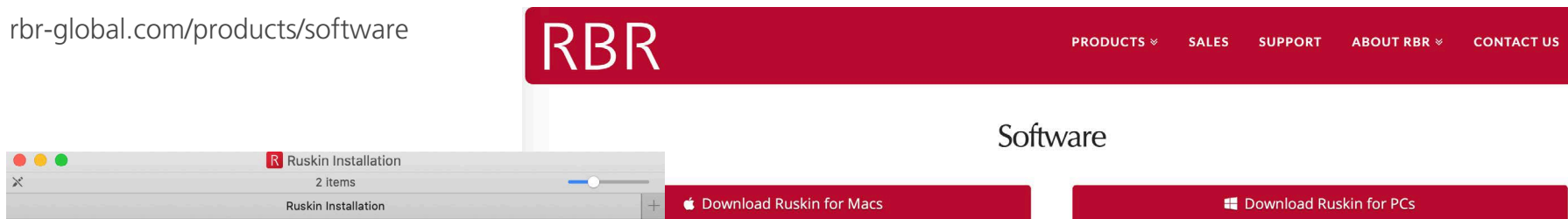
Continuous improvement - 4x per year



RBR

Installing

rbr-global.com/products/software



RBR

Connecting



RS-232/RS-485

RBR moved to USB in 2012

RS-232 still used for instrument-to-instrument comms

RS-485 if longer than 50m



USB

Wi-Fi available as option in all Generation³ instruments

Ethernet for specials or serial-to-ethernet dongles



Wi-Fi

Auto-detect for serial: greedy acquisition and baud-rate hunting



Ethernet

Simulating

What if you don't have the instrument?

Demo

RBR

Autonomy Engine

Batteries

- Lithium thionyl chloride (LTC)*
- Lithium iron (50%)
- Alkaline (30%)
- Lithium ion (25%)
- Nickel metal hydride (NiMH) (25%)

* LTC limited to \leq CTD (low peak current)

External batteries

Deploy

Schedule

- sync the clock
- Start now or later
- Sampling modes
 - Continuous
 - Average
 - Burst
 - Directional
- Gate
 - twist activation
 - marine wet switch

Waves – June 17 webinar

RBR

Download

Normal downloads

Automatic behavior for mass deployments

Auto-deploy/stop/download

Display

Thumbnail

Panning, zooming, and axes changes

Navigating by profile (cast detection)

Annotations

Preferences

Derived channels

Plotting defaults

Datasets

RSK files - what are they really?
Read them in Matlab/Python/R/etc
Export TEXT
Export Excel

Calibration

Calibration expiry

Request a calibration quotation

RBR

Support

Comment on Ruskin - talk to support directly

RBR

Misc

Topics to cover

Options window

- Realtime

- Serial

- Storage

- Format

- Mode

- Wi-Fi

Other tabs

- Information

- Calibration

- Parameters

GPS tags - manual vs mobile app

Desktop vs mobile files - different features? viewing the quick profiles on mobile app only available from mobile mode

Auto gain features for certain sensors

some detail on the settings of derived channels (and its affect on data o/p, processing of D data to remove atmosphere, etc.)

When to use the Upgrade Instrument Firmware

Advanced sampling



Thank You

Contact Us

RBR

rbr-global.com

info@rbr-global.com

+1 613 599 8900

RBR