

# RBR

Welcome, the RBR Webinar will begin shortly...



**RBR**

rbr-global.com

## Tides & Waves

Eric Siegel

# Wave Height Measurements

- Statistical representation of the complex wave field
- Walter Munk defined significant wave height to mathematically express the height estimated by a "trained observer" at sea



# Wave & Tide Loggers



RBRsolo<sup>3</sup> D | wave16 (or | tide16)



RBRduet<sup>3</sup> T.D | wave16 (or | tide16)



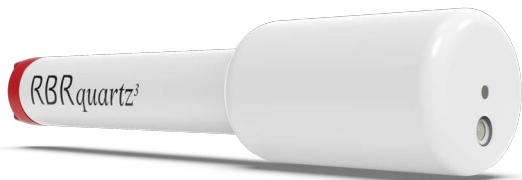
RBRvirtuoso<sup>3</sup> D | wave16 (or | tide16)



RBRduo<sup>3</sup> T.D | wave16 (or | tide16)



RBRconcerto<sup>3</sup> C.T.D | wave16 (or | tide16)



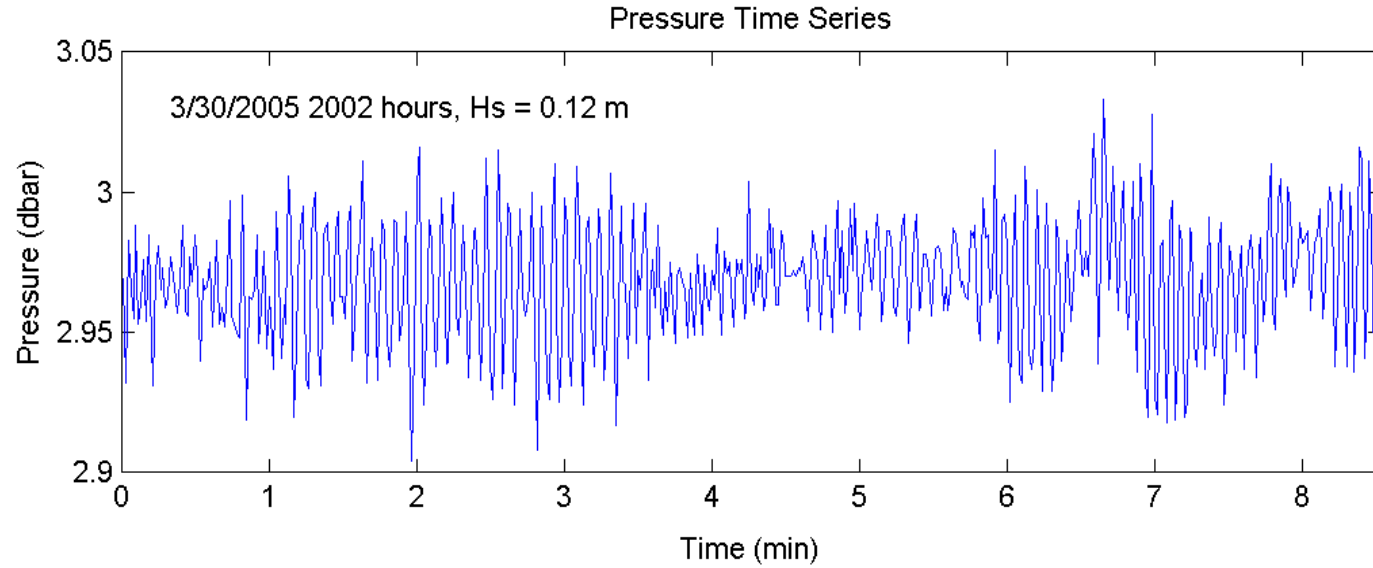
RBRquartz<sup>3</sup> Q | wave16 (or | tide16)



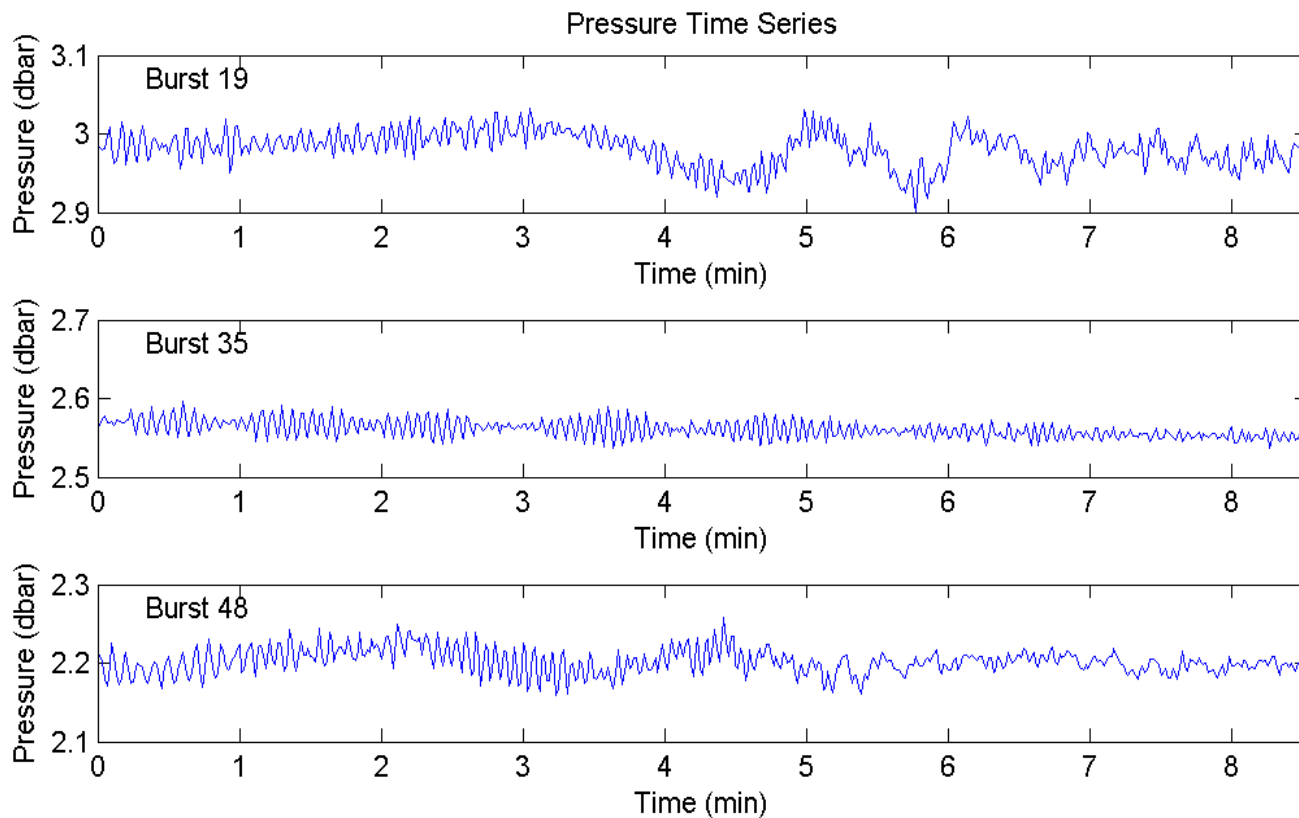
RBRmaestro<sup>3</sup> C.T.D | wave16 (or | tide16)

RBR

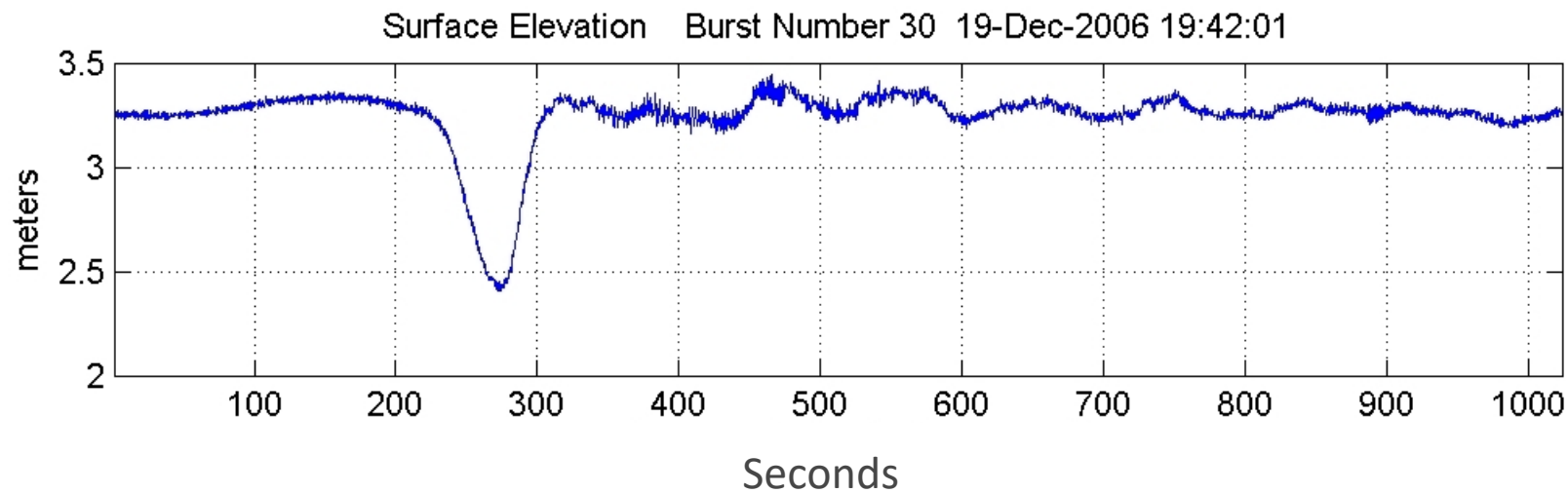
# Ocean Waves



# Confused Seas



# Ship Waves



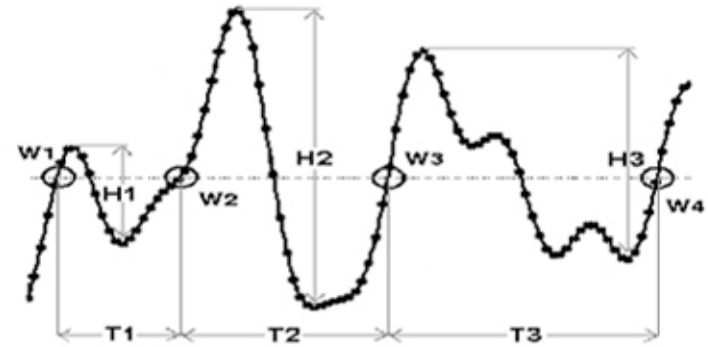
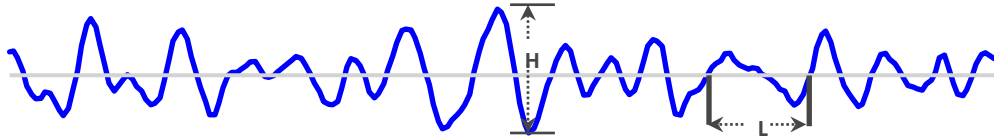
# Wave Properties

Wave Height (m)	Wave Period (s)
<ul style="list-style-type: none"><li>Significant wave height (<math>H_s</math>, <math>H_{1/3}</math>, <math>H_{m0}</math>)</li></ul>	<ul style="list-style-type: none"><li>Significant wave period</li></ul>
<ul style="list-style-type: none"><li>1/10 wave height</li></ul>	<ul style="list-style-type: none"><li>1/10 wave period</li></ul>
<ul style="list-style-type: none"><li>Maximum wave height</li></ul>	<ul style="list-style-type: none"><li>Maximum wave period</li></ul>
<ul style="list-style-type: none"><li>Average wave height</li></ul>	<ul style="list-style-type: none"><li>Average wave period</li></ul>
<b>Other Variables</b>	
<ul style="list-style-type: none"><li>Wave energy (<math>\text{J}/\text{m}^2</math>)</li></ul>	
<ul style="list-style-type: none"><li>Tidal slope (<math>\text{m}/\text{hour}</math>)</li></ul>	

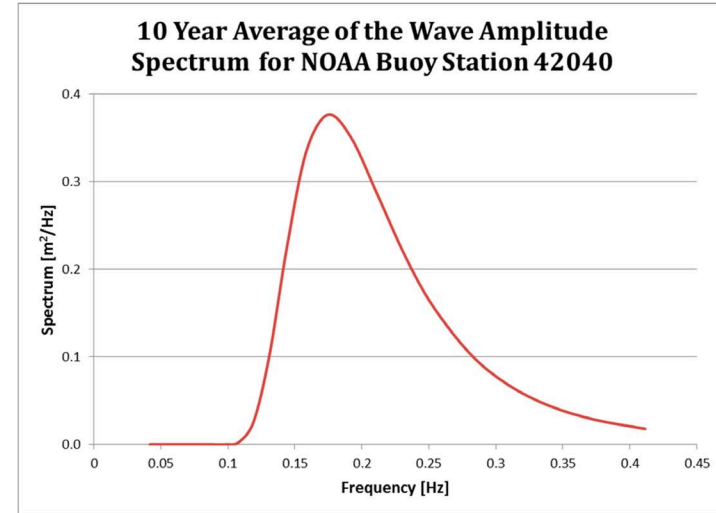


# Calculating Wave Height

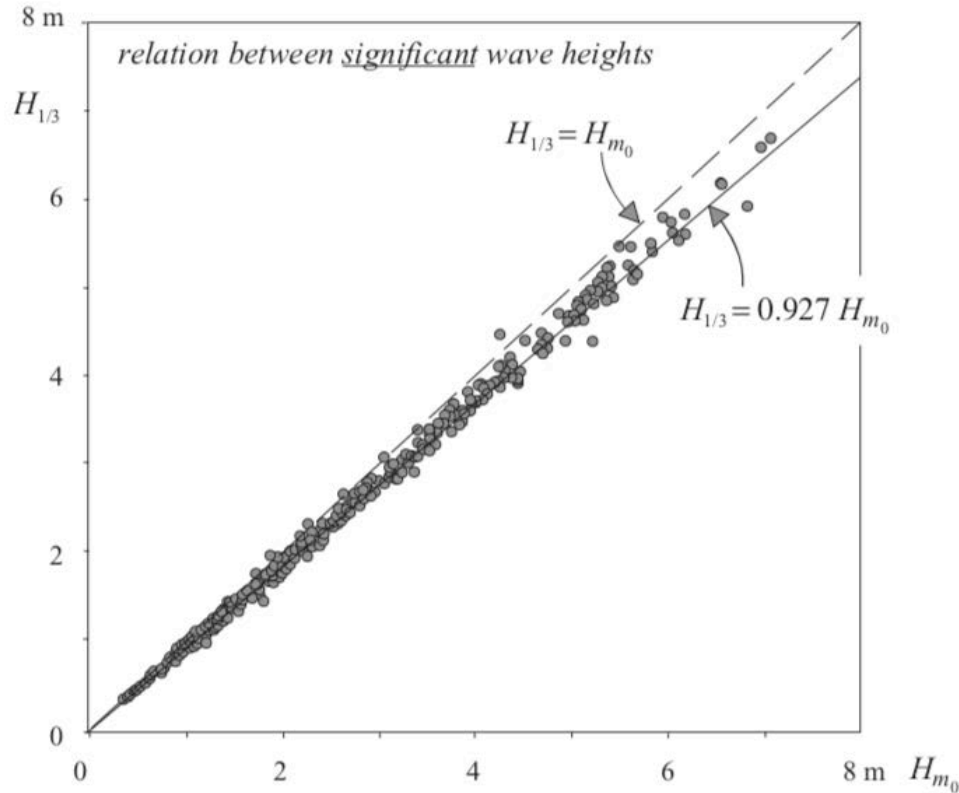
Measure time series of pressure



- **Method 1:** Time Domain (zero up-crossing)  
= Calculate mean of the 1/3 largest waves in a record  
=  $H_{1/3}$
- **Method 2:** Frequency Domain  
= Transform time series into power spectra  
=  $H_{m0} = 4\sqrt{\text{area}}$



# $H_s$ Time Domain ( $H_{1/3}$ ) vs Frequency Domain ( $H_{m0}$ )



Waves in Oceanic and Coastal Waters,  
by Leo H. Holthuijsen. Contemporary  
Physics - CONTEMP PHYS. 52. 75-75.  
10.1080/00107514.2010.529511.

# Ruskin Wave Processing – raw wave burst

Analysis Overview Channels File info

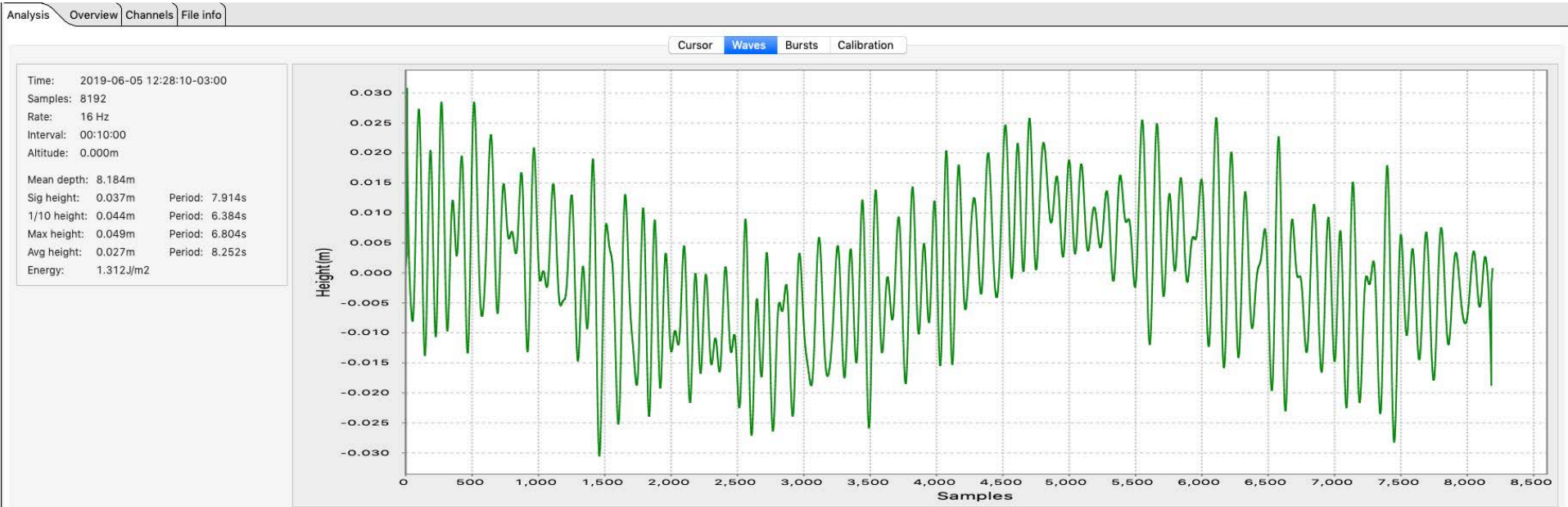
Cursor Waves Bursts Calibration

Time: 2019-06-05 12:28:10-03:00  
Samples: 8192  
Rate: 16 Hz  
Interval: 00:10:00



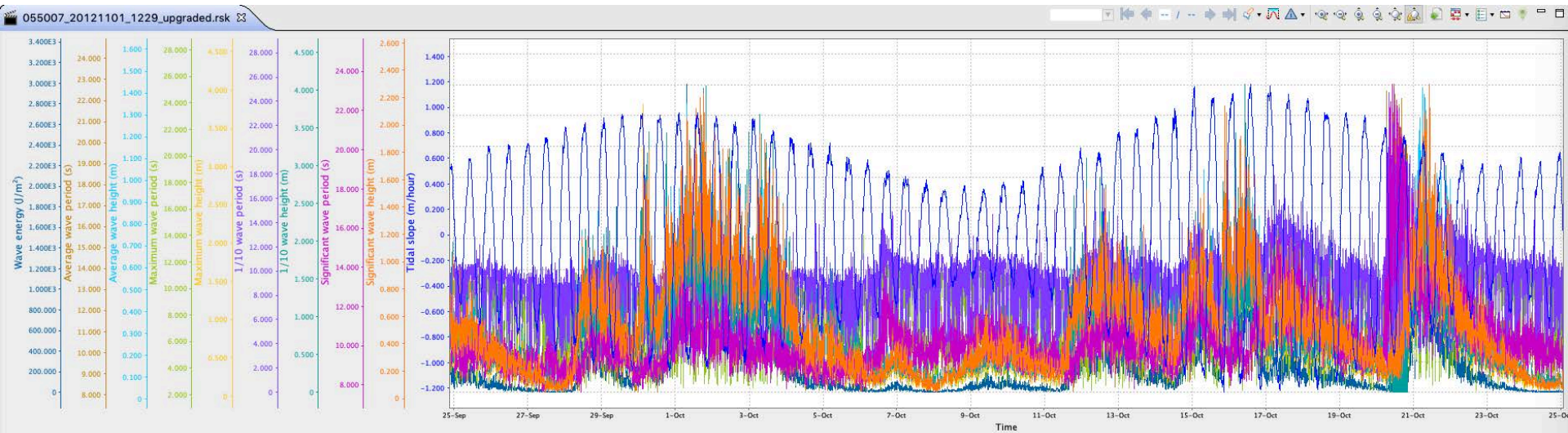
RBR

# Ruskin Wave Processing – remove trend, remove mean



- Zero up-crossing
- Order from smallest to largest
- Calculate statistics

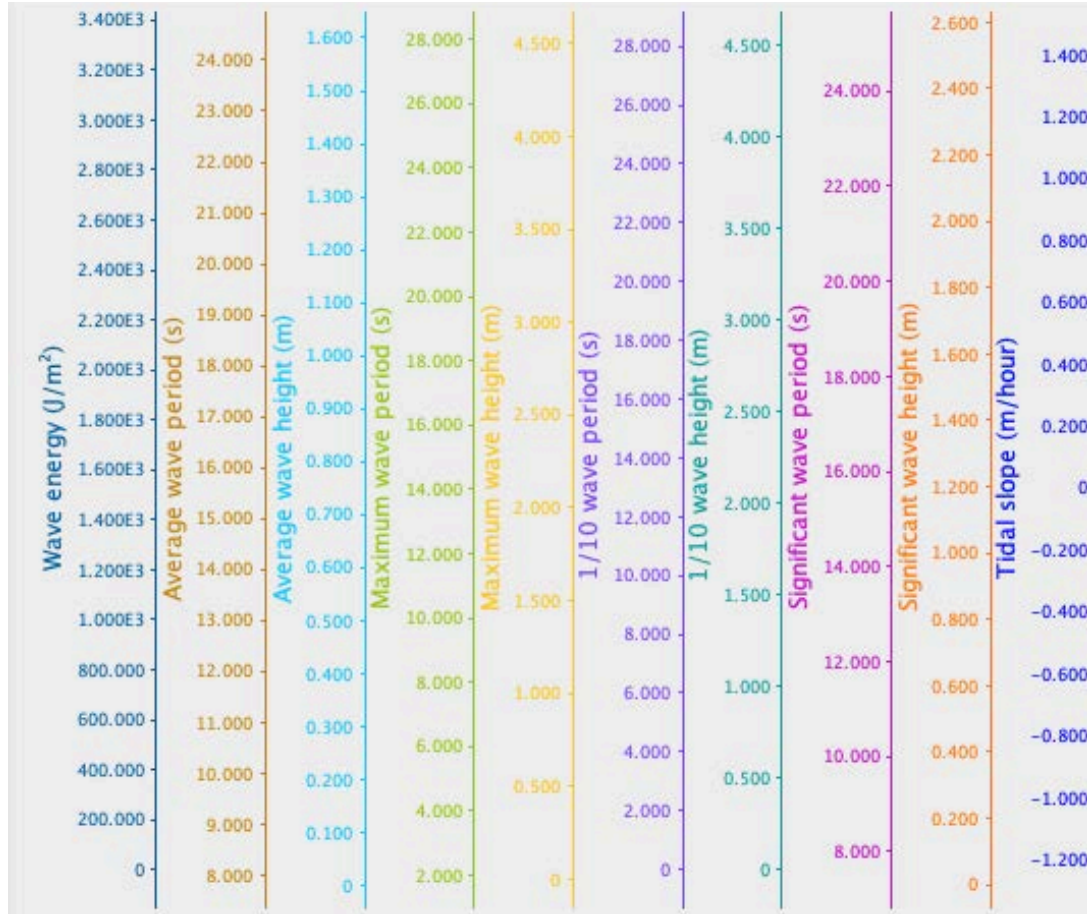
# Ruskin Wave Processing



RBR



# Ruskin Wave Processing



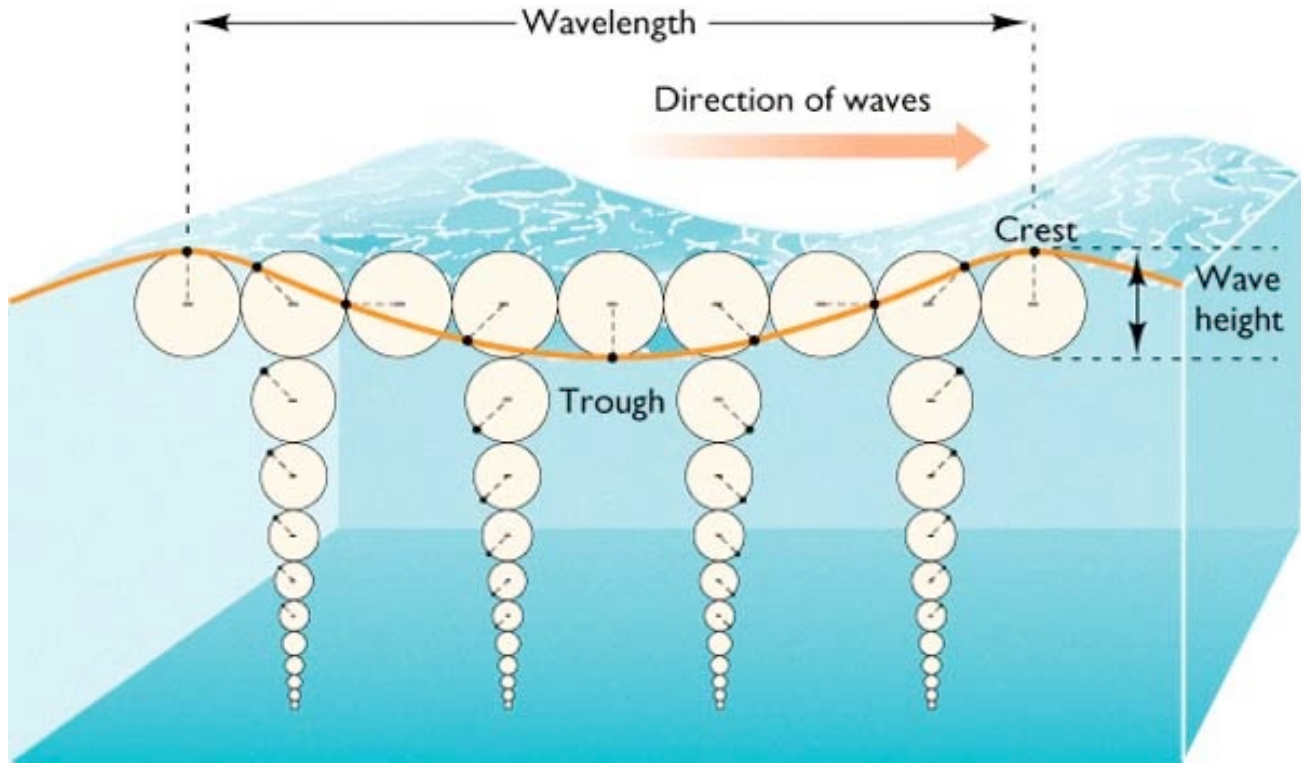
RBR

# Sampling Considerations

- Sample rate
- Burst duration
- Burst interval



# Sample Rate



Attenuation of Pressure

- High frequency (short wave length) pressure signal is attenuated very quickly with depth
- Deploy in shallow water
- Don't need to sample very quickly if deployed in deeper water

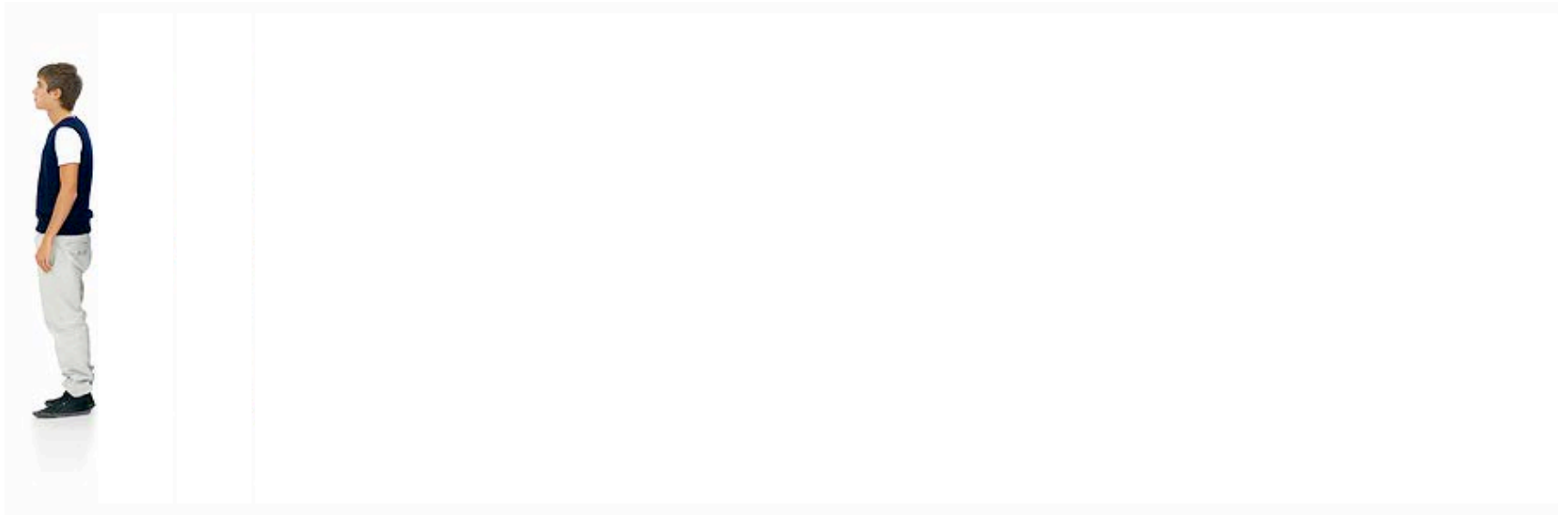


# Sample Rate

Nyquist frequency is important to consider

- If you sample a 1 Hz, the fastest wave you can resolve is 2 sec (0.5 Hz)
- If you sample a 2 Hz, the fastest wave you can resolve is 1 sec (1 Hz)
- If you sample a 4 Hz, the fastest wave you can resolve is 0.5 sec (2 Hz)
- If deeper than 3 m, no need to sample faster than 1 Hz
- But no downside to sampling faster

# Burst Duration



RBR

# Well Sampled Waves

Number of samples & sampling frequency

Combination should amount to '*well sampled*'

- 100 wave cycles sampled per burst (*site dependent*)
- Examples
  - 10 sec period requires min 17 min burst ( $10 \times 100 = 1000$  sec)
  - 5 sec period requires 8.5 min burst ( $5 \times 100 = 500$  sec)

	1024	2048	4096	8192
2 Hz	8.5 min	17 min	34 min	68 min
4 Hz	4.3 min	8.5 min	17 min	34 min
8 Hz	2.1 min	4.3 min	8.5 min	17 min
16 Hz	1 min	2.1 min	4.3 min	8.5 min

# Well Sampled Waves

Number of samples & sampling frequency

Combination should amount to 'well sampled'

- 100 wave cycles sampled per burst (*site dependent*)
- Examples
  - 10 sec period requires min 17 min burst ( $10 \times 100 = 1000$  sec)
  - 5 sec period requires 8.5 min burst ( $5 \times 100 = 500$  sec)

	1024	2048	4096	8192
2 Hz	8.5 min	17 min	34 min	68 min
4 Hz	4.3 min	8.5 min	17 min	34 min
8 Hz	2.1 min	4.3 min	8.5 min	17 min
16 Hz	1 min	2.1 min	4.3 min	8.5 min

common  
settings

RBR

# Well Sampled Waves

Number of samples & sampling frequency

Combination should amount to 'well sampled'

- 100 wave cycles sampled per burst (*site dependent*)
- Examples
  - 10 sec period requires min 17 min burst ( $10 \times 100 = 1000$  sec)
  - 5 sec period requires 8.5 min burst ( $5 \times 100 = 500$  sec)

	1024	2048	4096	8192
2 Hz	8.5 min	17 min	34 min	68 min
4 Hz	4.3 min	8.5 min	17 min	34 min
8 Hz	2.1 min	4.3 min	8.5 min	17 min
16 Hz	1 min	2.1 min	4.3 min	8.5 min

common  
settings

swell

RBR

# Burst Interval

Open Ocean



1 – 3 hours

Enclosed Bay



20 min – 1 hour

Depends on battery, memory, and deployment duration

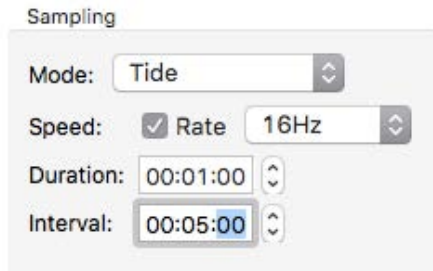
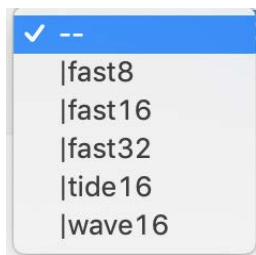
**RBR**

# Configuring Ruskin

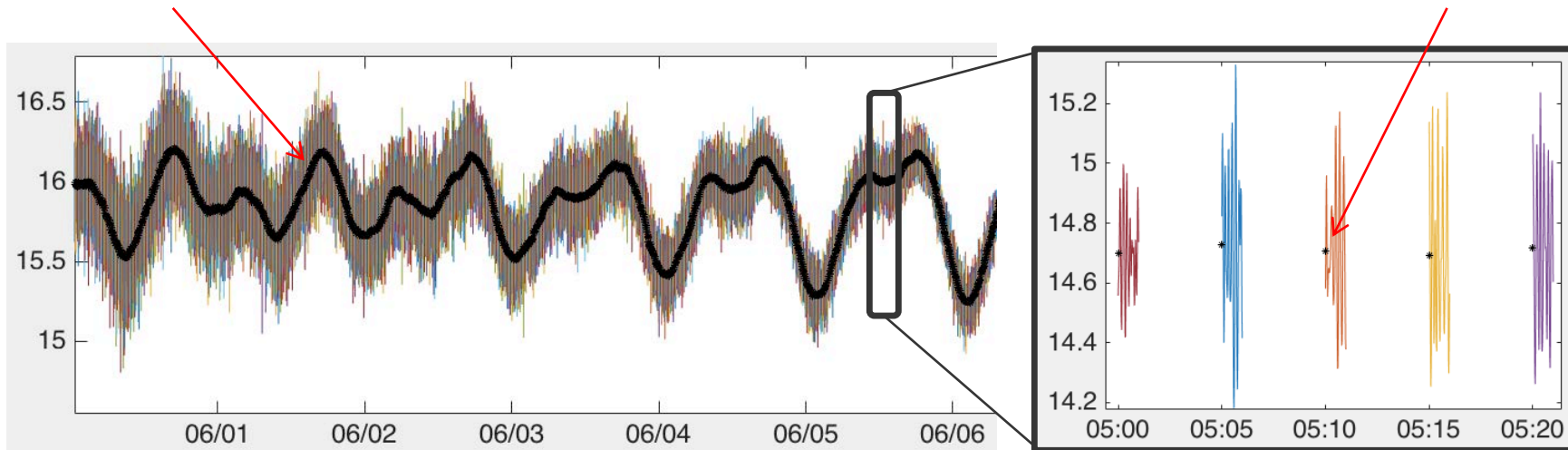


# |tide16

Filter out higher frequency variation



Only averaged data is saved



RBR



# |wave16

Wave  
"Burst"  
Sampling

Sampling

Mode: Wave

Speed: 16Hz

Duration: 32768

Interval: 01:00:00

0.25 Instrument altitude (m)

10.0 Mean depth of water (m)

Wave bandwidth: 0.0005 to 0.1889 Hz

Wave periods: 5.29 to 2048.00 secs

Height above  
bottom

Estimate water  
depth

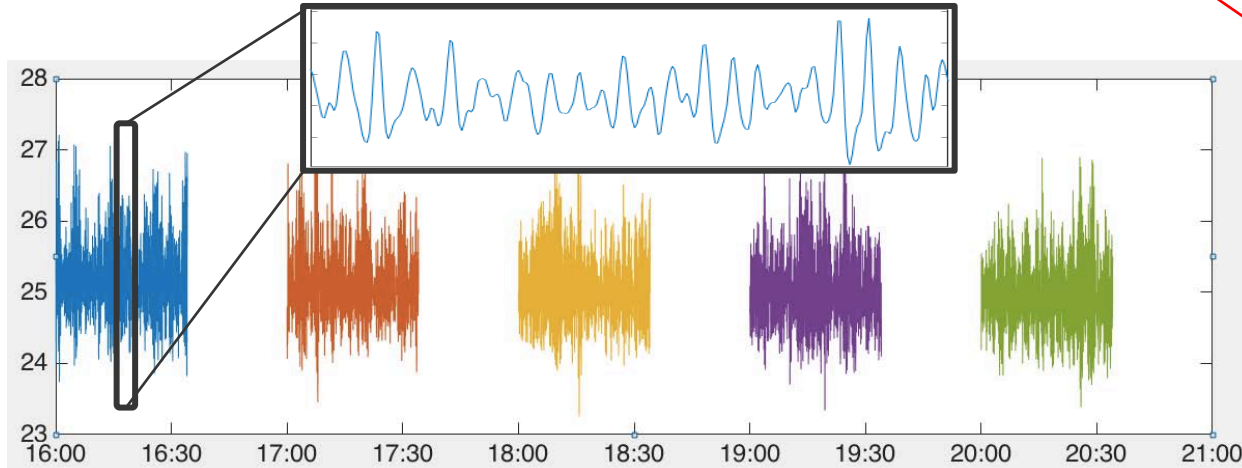
Estimate  
wave period  
limitations

~34 min

Every

1 hour

$(32768 \div 16 \div 60)$



RBR

# Frequency Limitations

Mode: Wave

Speed: 16Hz

Duration: 4096

Interval: 00:30:00

1.0 Instrument altitude (m)

2 Mean depth of water (m)

Wave bandwidth: 0.0039 to 0.4952 Hz

Wave periods: 2.02 to 256.00 secs

Mode: Wave

Speed: 16Hz

Duration: 4096

Interval: 00:30:00

1.0 Instrument altitude (m)

10 Mean depth of water (m)

Wave bandwidth: 0.0039 to 0.1899 Hz

Wave periods: 5.27 to 256.00 secs

Mode: Wave

Speed: 16Hz

Duration: 4096

Interval: 00:30:00

1.0 Instrument altitude (m)

5 Mean depth of water (m)

Wave bandwidth: 0.0039 to 0.2732 Hz

Wave periods: 3.66 to 256.00 secs

Mode: Wave

Speed: 16Hz

Duration: 4096

Interval: 00:30:00

1.0 Instrument altitude (m)

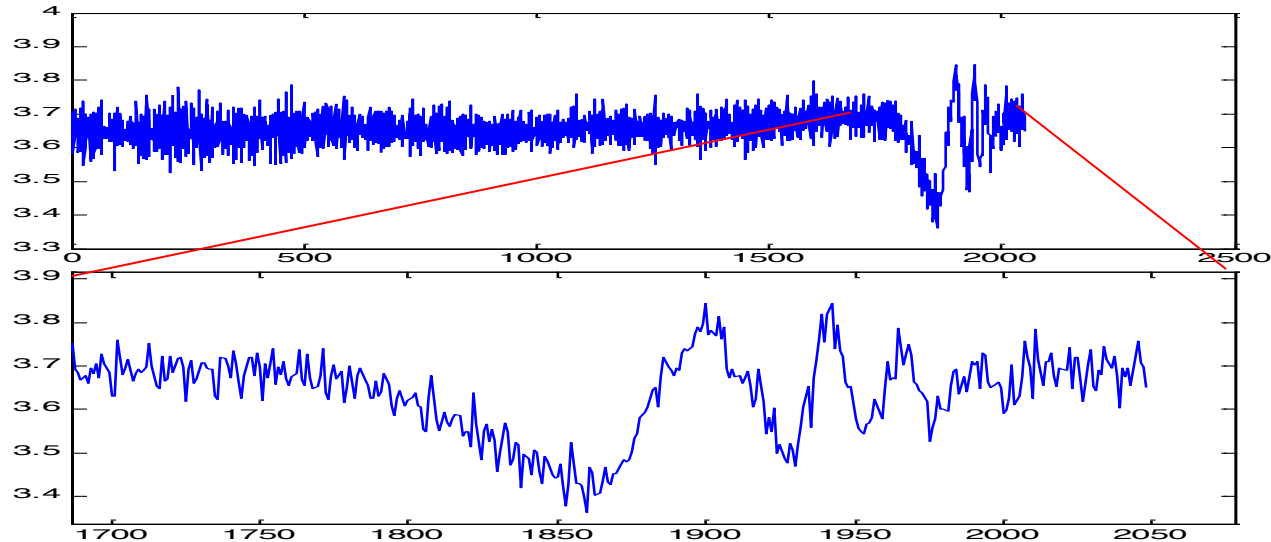
20 Mean depth of water (m)

Wave bandwidth: 0.0039 to 0.1338 Hz

Wave periods: 7.48 to 256.00 secs

# Measuring Ship Waves (Transient Waves)

- Linear wave theory doesn't apply
- Ship waves are mixed with regular waves
- Can't use standard wave metrics
- Must collect all raw pressure data



# Resources

<https://docs.rbr-global.com/support/ruskin/features/waves/wave-overview>

<https://docs.rbr-global.com/support/faq/software-and-firmware-questions/how-does-ruskin-process-tide-and-wave-data>

<https://docs.rbr-global.com/support/faq/software-and-firmware-questions/what-s-the-difference-between-tide-and-wave-mode-in-ruskin>

<https://rbr-global.com/support/matlab-tools>

RBR

# Upcoming Webinars

# Future Webinars



## CTD and sensor calibrations

**Greg Johnson**

**June 24, 2020 at 12PM EDT**

Learn about the RBR calibration procedure for conductivity, temperature, pressures, and other sensors, and how you can maintain, verify, and calibrate some sensors in the field.

[Register for the Webinar](#)

## Webinar 2.0

### Customer Experiences

Speakers Invited

[info@rbr-global.com](mailto:info@rbr-global.com)

RBR