

RBR

Welcome, the RBR Webinar will begin shortly...





Product Overview: *RBRconcerto*³ CTD

Eric Siegel
Sales Director



Loggers



OEM

Sensors



Systems



RBR



RBR

Sensor	Accuracy
Conductivity	± 0.003 mS/cm
Temperature	$\pm 0.002^{\circ}\text{C}$
Depth	$\pm 0.05\%$ FS



RBRconcerto³ C.T.D

240 million readings, up to 32Hz sampling

Available configurations: RBRconcerto³ C.T.D|fast8, RBRconcerto³ C.T.D|fast16, RBRconcerto³ C.T.D|fast32

750m, 2000m, and 6000m ratings

USB-C download

Twist Activation and Wi-Fi

RBR



RBRconcerto³ C.T.D+

240 million readings

Up to 5 channels combinations: T.ODO, Fl, Tu, pH, PAR, ORP, etc...

750m, 2000m, and 6000m ratings

USB-C download

Twist Activation and Wi-Fi

RBR



RBRmaestro³

240 million readings

Up to 10 channels combinations: T.ODO, Fl, Tu, pH, PAR, ORP, etc...

Bulkhead-mounted and cable-connected sensors

USB-C download

Twist Activation and Wi-Fi

RBR



RBR*brevio*³ C.T.D

Shorter housing with 4 AA batteries

Internal logging, Wi-Fi enabled, or integrated with vehicle control system

Available configurations: RBR*brevio*³ C.T.D|fast16, RBR*brevio*³ C.T.D|fast32, RBR*brevio*³ C.T.D|deep
750m, 2000m, and 6000m ratings

RBR

Vertical Profiling on Vehicles



RBR

Realtime Data – Cabled Connection



RBR

Twist Activation with Wi-Fi



RBR

Deployment Considerations



simRBRconcerto³ 904031

Configuration Information Calibration Parameters

Schedule

Status: **Not enabled**

Clock: 2020-07-14 12:56:38-03:00 UTC Local

Start: **Not available with twist activation**

End: Gated **38.2 days** **+16.2 days**

Power

Battery: Lithium thionyl chloride Fresh

External: None Fresh

Extended battery endcap

Sampling

Mode: Continuous

Speed: Rate 16Hz

Gating

Mode: Twist activation

Deployment Considerations



simRBRmaestro³ 902406

Configuration Information Calibration Parameters

Schedule

Status: **Not enabled**

Clock: 2020-07-14 12:56:57-03:00 UTC Local

Start: **Not available with twist activation**

End: Gated 7.0 days +40.7 days

Power

Battery: Lithium iron Fresh

External: None Fresh

Extended battery endcap

Sampling

Mode: Continuous

Speed: Rate 8Hz

Gating

Mode: Twist activation

RBR

#RBR2020 Cohort

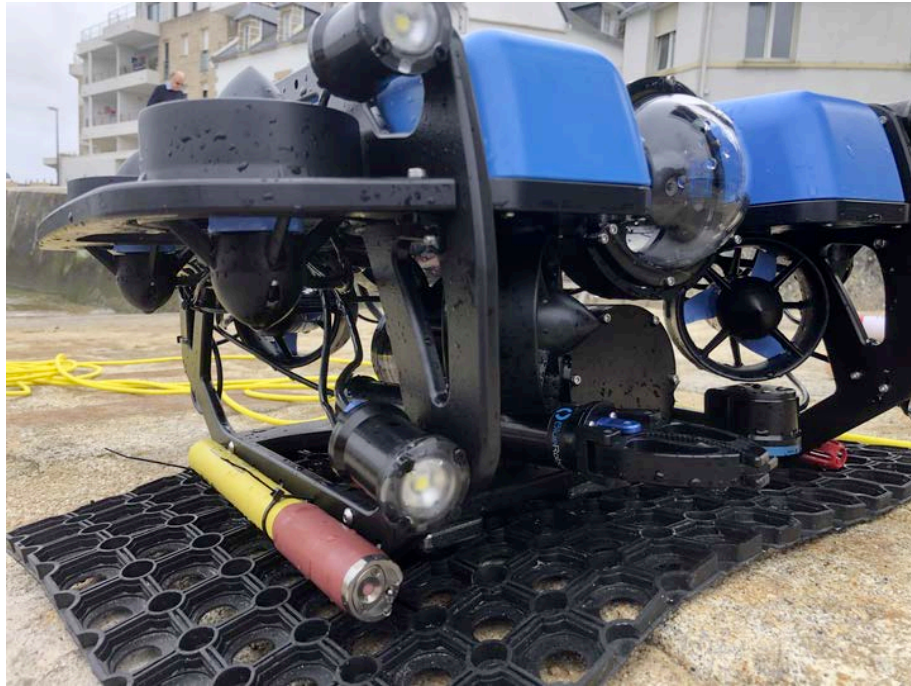
<https://rbr-global.com/about-rbr/rbr2020-cohort>



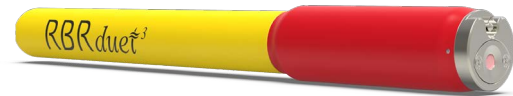
RBR

#RBR2020 Cohort

<https://rbr-global.com/about-rbr/rbr2020-cohort>



BlueROV



RBR

Upcoming Webinars

Future Webinars



Community-based observing of the coastal ocean in Nunatsiavut

Eric Oliver (Dalhousie)

July 22, 2020 at 12PM EDT

This webinar will outline some pilot activities of community-based observing of the coastal ocean in Nunatsiavut, and plans to expand in the future.

[Register for the Webinar](#)



First look under Thwaites Glacier, Antarctica

Britney Schmidt (GIT)

July 29, 2020 at 12PM EDT

Learn how GIT team are using the RBRconcerto³ C.T.D in Antarctica to profile the water column and map the various water masses that interact with ice and distribute nutrients.

[Register for the Webinar](#)

RBR



Thank You

Contact Us

RBR

rbr-global.com

info@rbr-global.com

+1 613 599 8900

RBR